

Directions

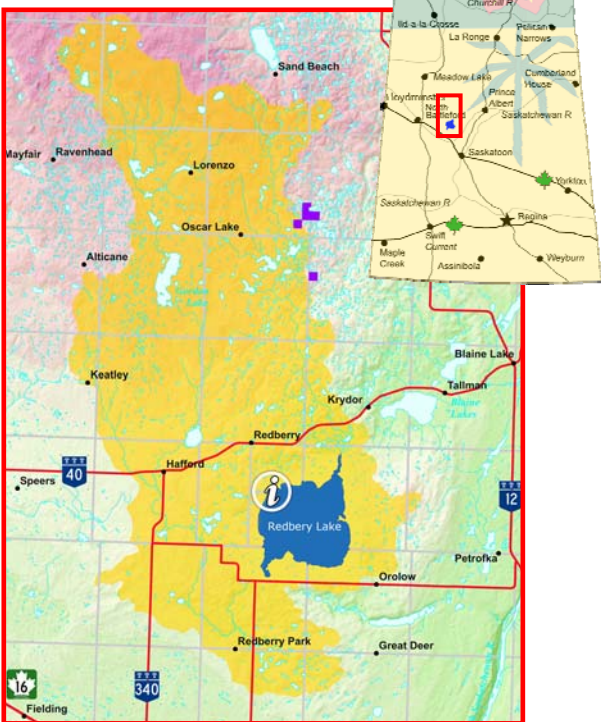
By car you can reach the Research & Education Centre coming

from **Saskatoon** on Hwy 16 heading west for The Battlefords. Turn north onto Hwy 340 in Radisson until intersecting Hwy 40 in Hafford. Turn east for Blaine Lake until sign Redberry Lake Regional Park.

from **Lloydminster** on Hwy 16 heading east to The Battlefords. Turn east onto Hwy 40 direction Prince Albert until exit Redberry Lake Regional Park.

from **Prince Albert** on Hwy 3 heading west for The Battlefords. Turn west onto Hwy 40 direction The Battlefords until exit Redberry Lake Regional Park.

All directions: Follow signs to Regional Park, pass park entrance and look for Research & Education Centre sign.



Address Research & Education Centre, Office

Redberry Lake Biosphere Reserve
Land Location SW 23-43-9-W3
RM Redberry, SK, S0J 1A0
GPS Coordinates 52.717163, -107.215233

Mailing Address

Redberry Lake Biosphere Reserve
P.O. Box 221
Hafford, SK, S0J 1A0

Phone: (306)-549-9311

Fax: (306)-549-4061

communications@redberrylake.ca

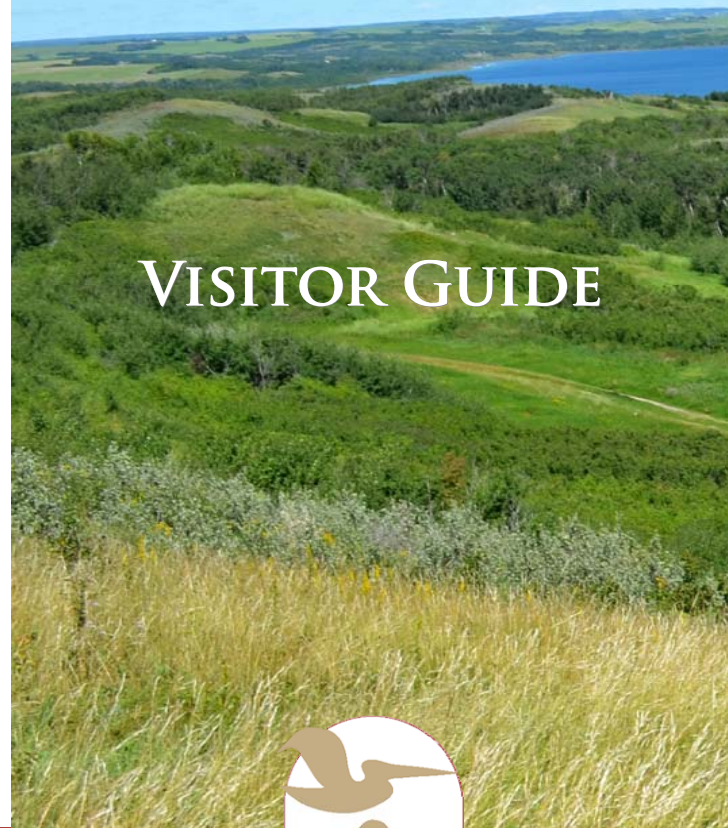


www.redberrylake.ca

© RLBR, 2012



REDBERRY LAKE WORLD BIOSPHERE RESERVE



VISITOR GUIDE



Our Living Legacy



Canadian
Biosphere
Reserves Association
Association
canadienne des
réserves de la
biosphère



Redberry Lake Biosphere Reserve

In 2000 Redberry Lake Biosphere Reserve was designated by the UNESCO and joined the global network of today's 580 biosphere reserves. There are 16 biosphere reserves in Canada – Redberry Lake Biosphere Reserve is the only one in Saskatchewan.



Redberries gave Redberry Lake its name (© Thomas Abe)

A biosphere reserve is a defined area with ecological significance. It promotes answers on how to protect the environment and – at the same time – live and work within the region. The goal is to achieve a sustainable way of life for all people and species.



© John Kindrachuk

Redberry Lake Biosphere Reserve covers the entire Redberry Lake watershed and includes the saline lake as well as 112,200 hectares of rolling prairie, dotted with seasonal ponds and marshes, along with aspen/shrub groves.

Go Exploring

Spring through fall, hikers, nature and bird lovers come to Redberry Lake and the Biosphere Reserve to relax and to savor the region's beauty. There is rolling prairie with small patches of natural mixed grass, open landscapes with amazing skies and sunsets, and a vast variety of birds and wildlife.

When exploring please respect land owners rights on private properties.

Birding

Redberry Lake and its four islands are a Migratory Bird Sanctuary and dedicated as an Important Bird Area (IBA). Bring your binoculars and enjoy watching Pelicans, Cranes, Herons and many more of our feathered friends.



American Avocet (© John Kindrachuk)

The winter is much quieter and the perfect season to enjoy the peaceful silence while skiing or snowshoeing. And when it gets dark, the Northern Lights will be dancing on the night sky!

Research & Education Centre



© Rachel Turnquist

The Research & Education Centre is located in Redberry Lake Regional Park, just 11 kilometers east of the Town of Hafford. It features displays on local history and culture as well as information about Redberry Lake and other biosphere reserves around the world. This building is also the office of Redberry Lake Biosphere Reserve and visitors are always welcome.

Hiking

Lookout Trail (moderate walking), 1.5 km (return)

How to get there: On Hwy. 40 follow the signs to Redberry Lake Regional Park. But instead of turning left to the Park entrance drive straight on. Follow the road for about 2 kilometers until you arrive at a right hand bend (there is a farm on the left hand side). Turn left here and follow the road for 3.3 kilometers. Before the road turns right, park your vehicle on the left hand side at the edge of a field (please access by foot only). GPS: 52.667592,-107.237875

Walk up the hill and enjoy the beautiful lookout on Redberry Lake and its islands as you arrive the top. If you are lucky you can also see some wildlife in the valley.

Crooked Bush (easy walking), 200 m (loop)

How to get there: Past Speers on Hwy. 40 to Flint Road and follow the sign "Crooked Bush". GPS: 52.870979,-107.537538

Walk along a boardwalk and admire these wild aspen trees. They do not grow straight up like normal trees but rather stay twisted, looped and bent. A display explains some of the theories about what made the trees grow like this. Bring a lunch! There is a picnic table on-site.



© Rachel Turnquist



© Thomas Abe