

## Workshop Partners:

**Society For Range Management  
Prairie Parkland Chapter**

**Redberry Lake Biosphere Reserve**

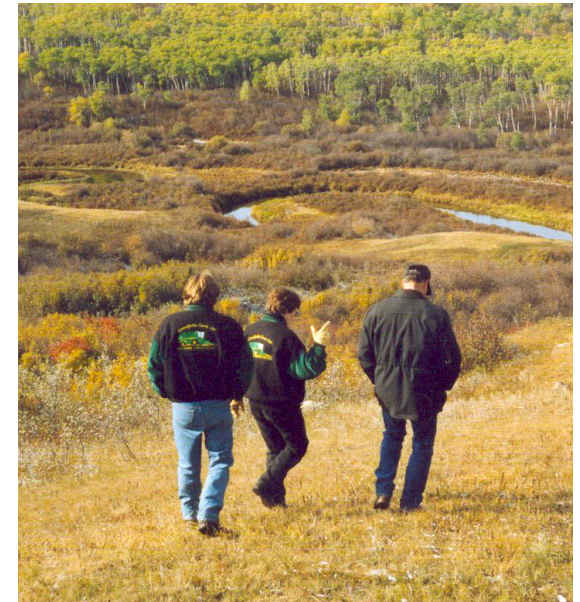
**Saskatchewan Research Council**

**Ministry of Agriculture**

**Saskatchewan Watershed Authority**

**Saskatchewan Institute of Agrologists**

# Back To The Field: Essential Plant Skills 2012



**Advanced Plant Identification and  
Ecological Health Assessment Workshop  
Redberry Lake Biosphere  
Reserve Center  
Hafford SK  
May 29,30 2012**

The Prairie Parkland Chapter of the Society For Range Management is offering a spring workshop to help you get *Back To The Field*. This workshop is an opportunity for professionals involved in land management to brush up on plant identification and ecological health assessment techniques.

The format of the workshop will start with a basic review of riparian, grassland and forest health assessment techniques and plant identification. The second day will take these basic techniques and explore how to design more detailed vegetation inventories. This will include conducting an actual inventory.

This workshop is provides important skills to professionals involved with:

- Agricultural extension
- Environmental Farm Planning
- Environmental assessment
- Species at Risk
- Watershed groups
- Wildlife habitat management
- Riparian management

The entire workshop is based out the Redberry Lake Biosphere Reserve Center and will feature the amazing landscapes of the Redberry Lake area.

## **Tuesday May 29**

**9:00 am**– Registration

**9:30 am**- Introduction to Grassland, riparian and forest health assessment methods

**10:30 am** Head into the field for plant identification brush up

**12:00 pm Lunch** – Bagged lunch in the field

**12:30 pm** Practice riparian, grassland and forest assessment

**5:30 pm** Return to hall for supper

**7:30 pm** - Slide show review of plant identification

## **Wednesday, May 30**

**7:30** Breakfast

**8:30 am** - Presentation on designing vegetation inventory methods and data management

**9:30 am** - Head into the field for review of plant identification

**11:00 am** – Begin assessment of case study property

**12:00 pm Lunch** – Bagged lunch in the field

**3:00 pm** – Return to Hall for review results of case study

**4:00 pm** - Depart for home

For information and to register contact:

Nadia Mori  
Phone: 306-946-3219  
[Nadia.Mori@gov.sk.ca](mailto:Nadia.Mori@gov.sk.ca)

**Cost is \$75 and covers transportation, 1 breakfasts, 2 lunches, and 1 supper. Please bring registration fee to the workshop as cash or cheque (made to *Society For Range Management -PPC*).**

**Participants are responsible for their own accommodations**

There are electrified campsites available at Redberry Lake for at least 20-25 campers. To book call 549-4612

The K Bar Inn is located in Hafford 549-2244

Radisson is about 20 minutes away with Midway Motel 827-2116

Blaine Lake is about 20 minutes also with Country Girls Inn 497-3233